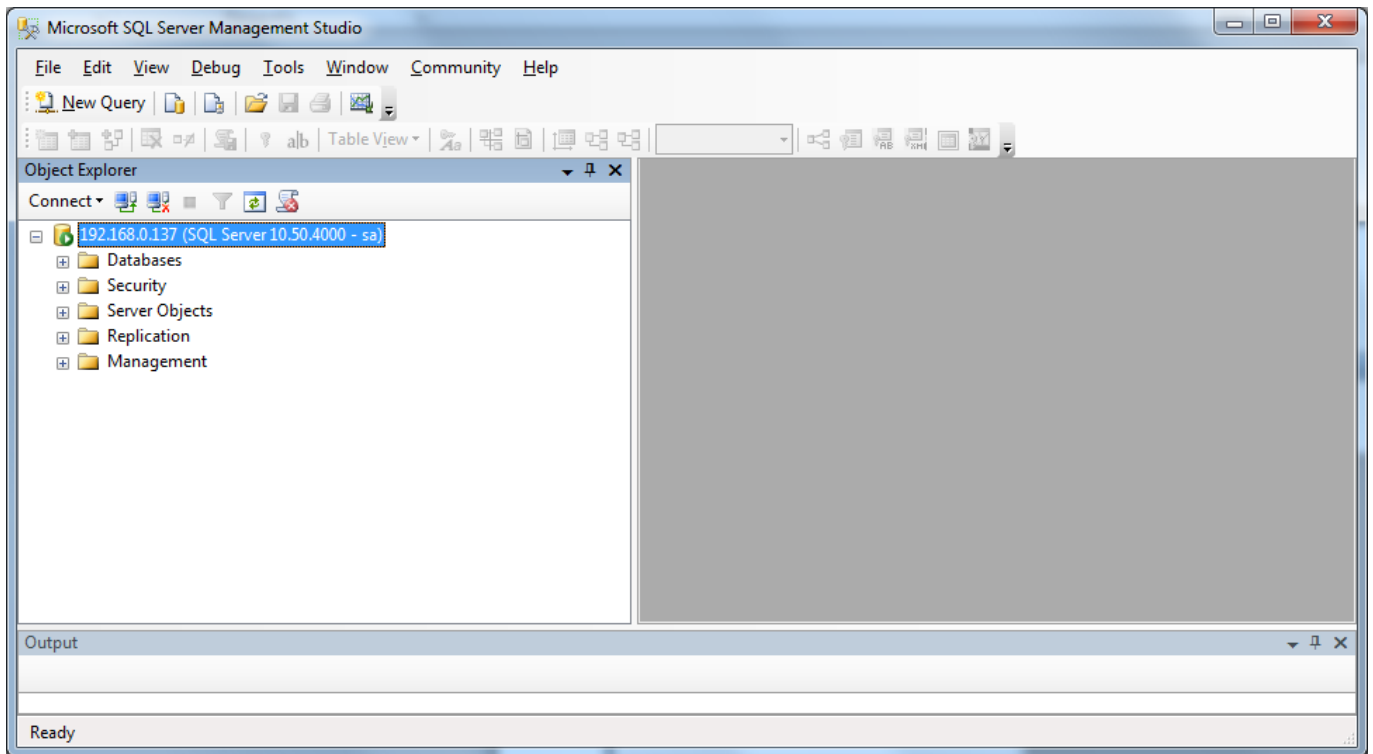


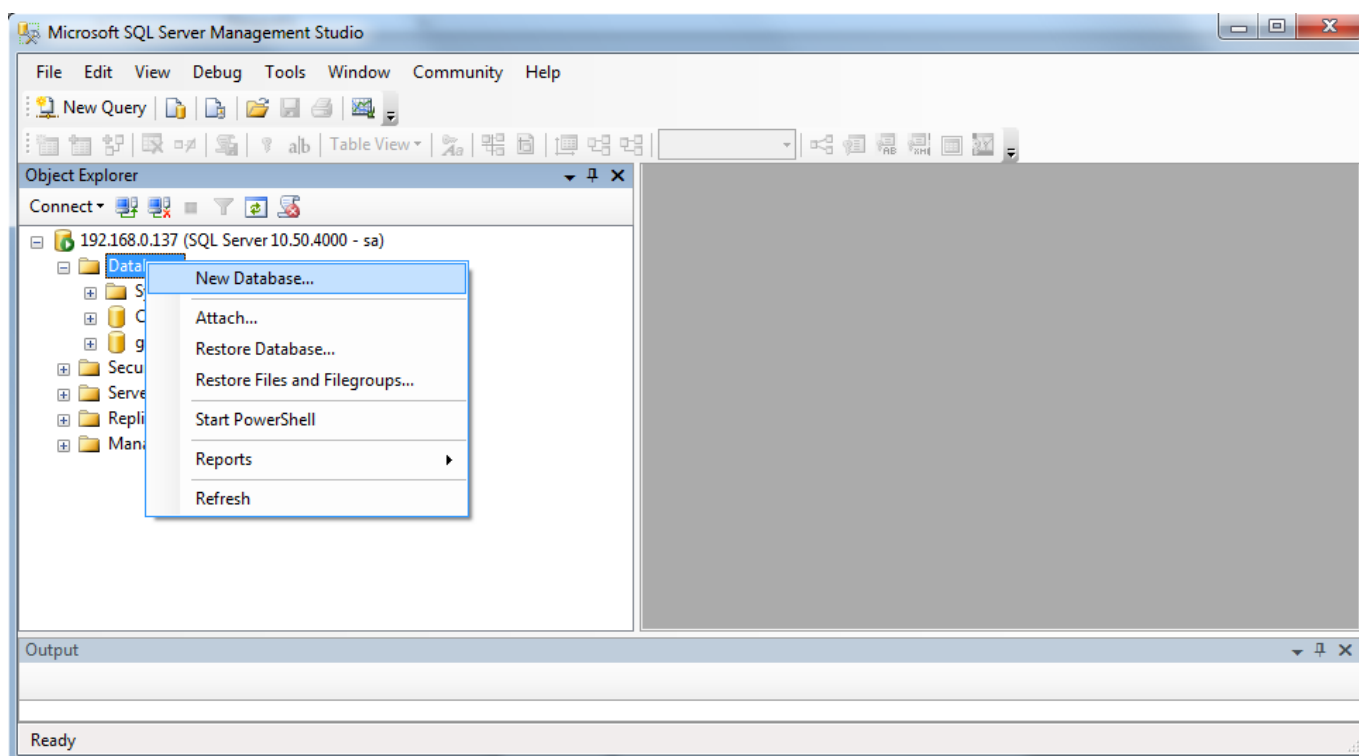
Creazione Database SQL Server (2008) per GW4

Creazione Database

Accedere a Microsoft SQL Server Management Studio (utente sa /xxx)

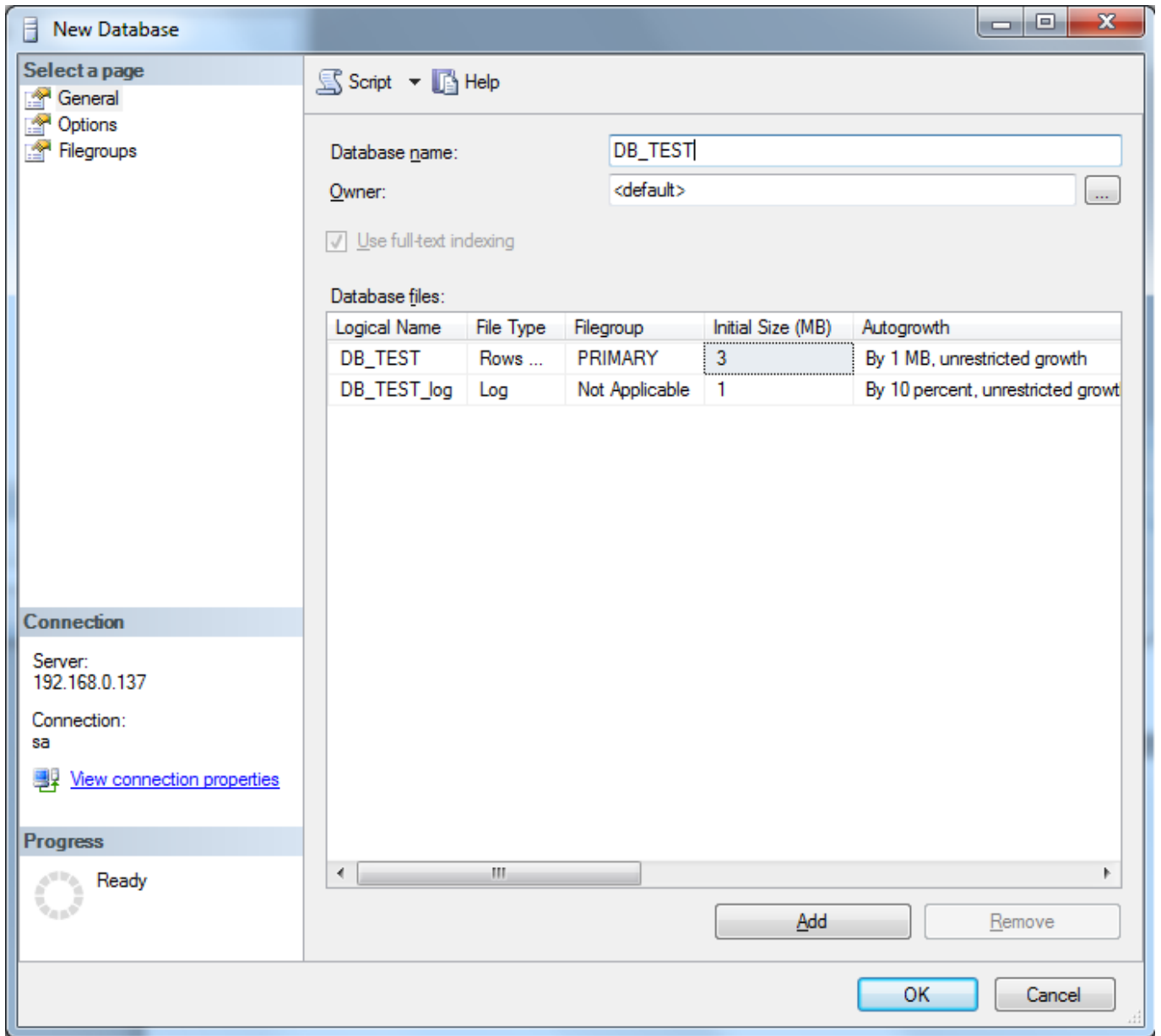


Accedere a Databases → New Database ...



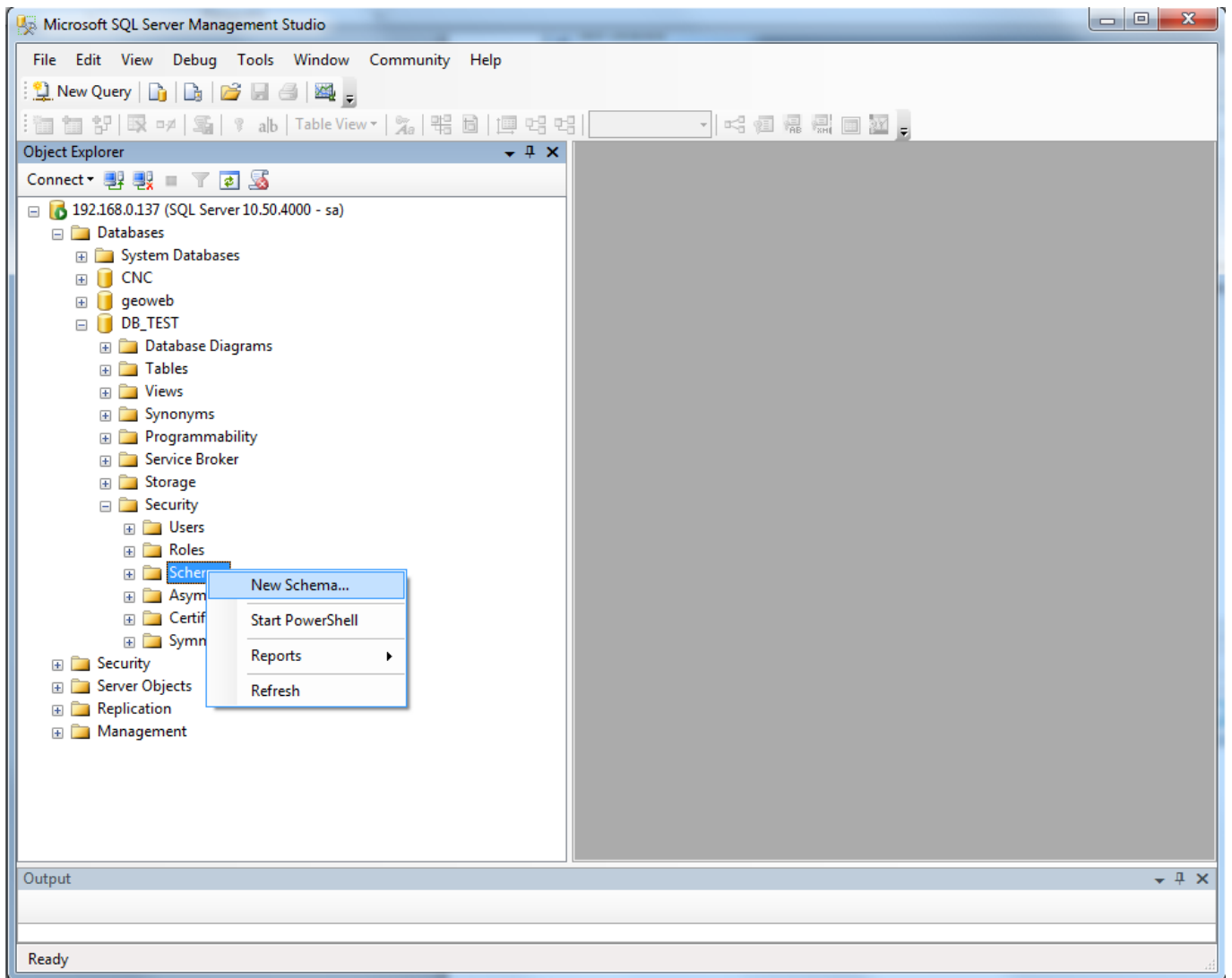
Creare un nuovo database specificando:

- Elenco puntato Database Name (es. DB_TEST)



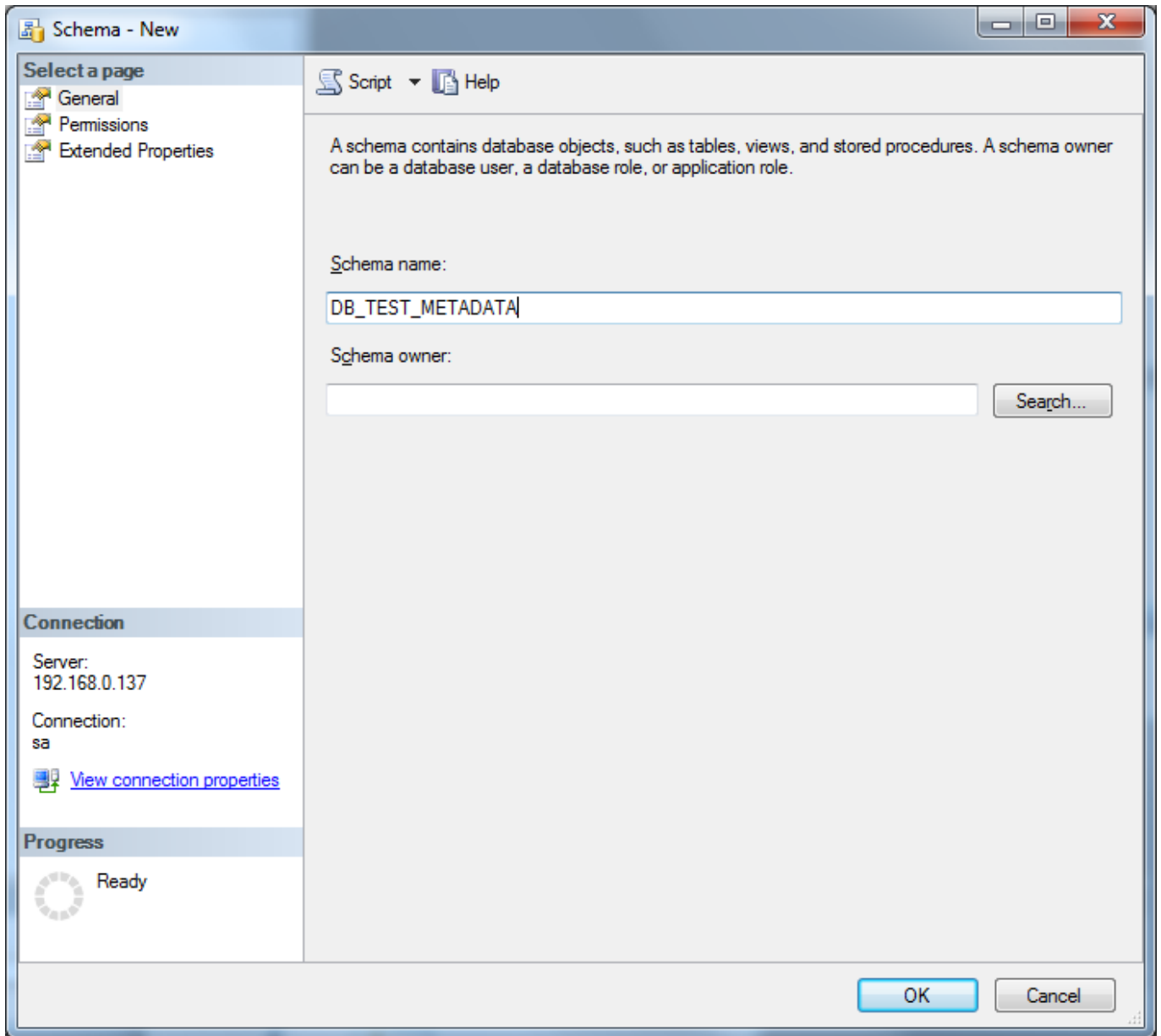
Creazione Schema

Accedere a Database → DB Specifico (es. DB_TEST) → Security → Schemas → New schema



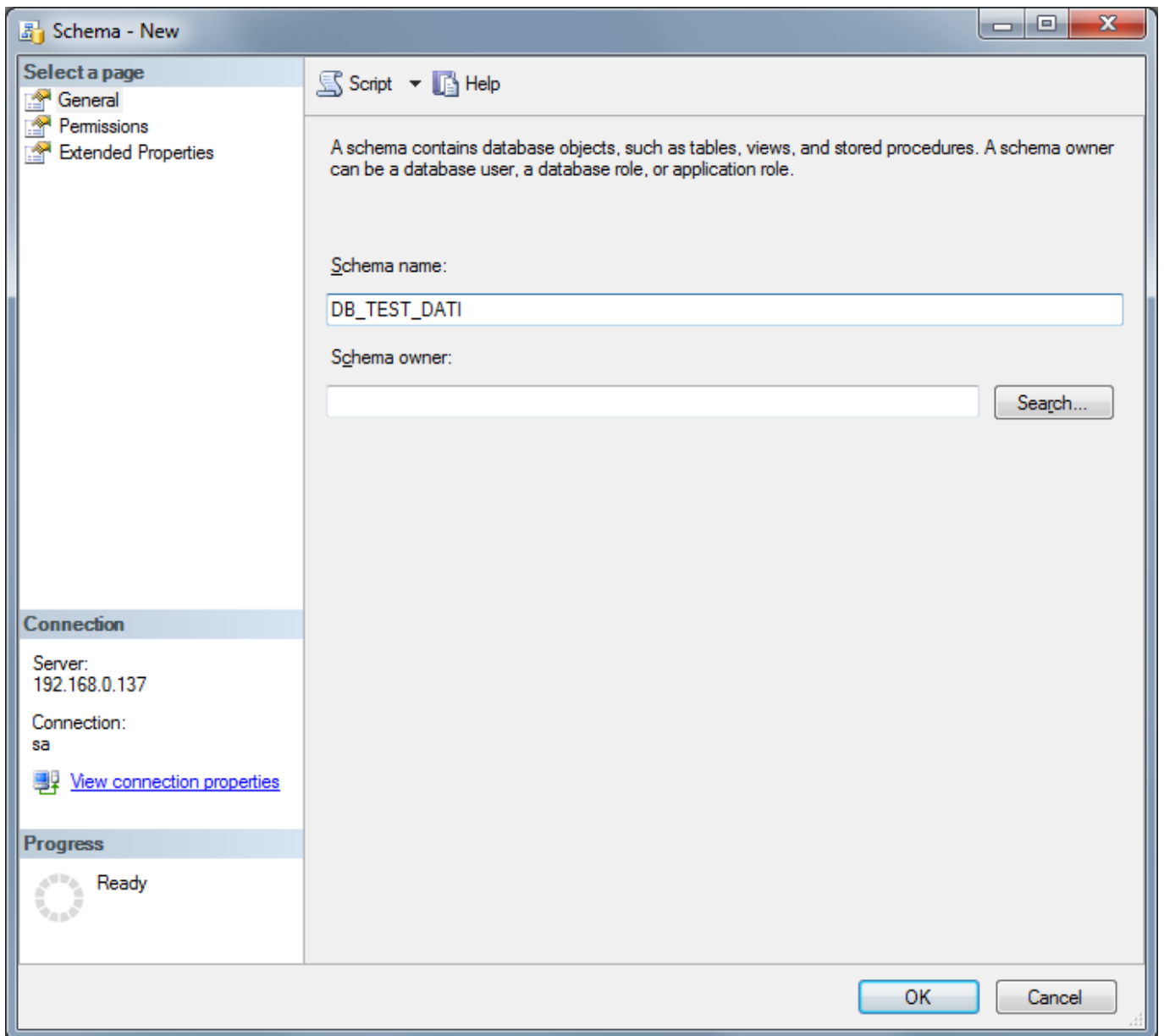
Creare un nuovo schema per i metadati specificando:

- Database Name (es. DB_TEST_METADATA)



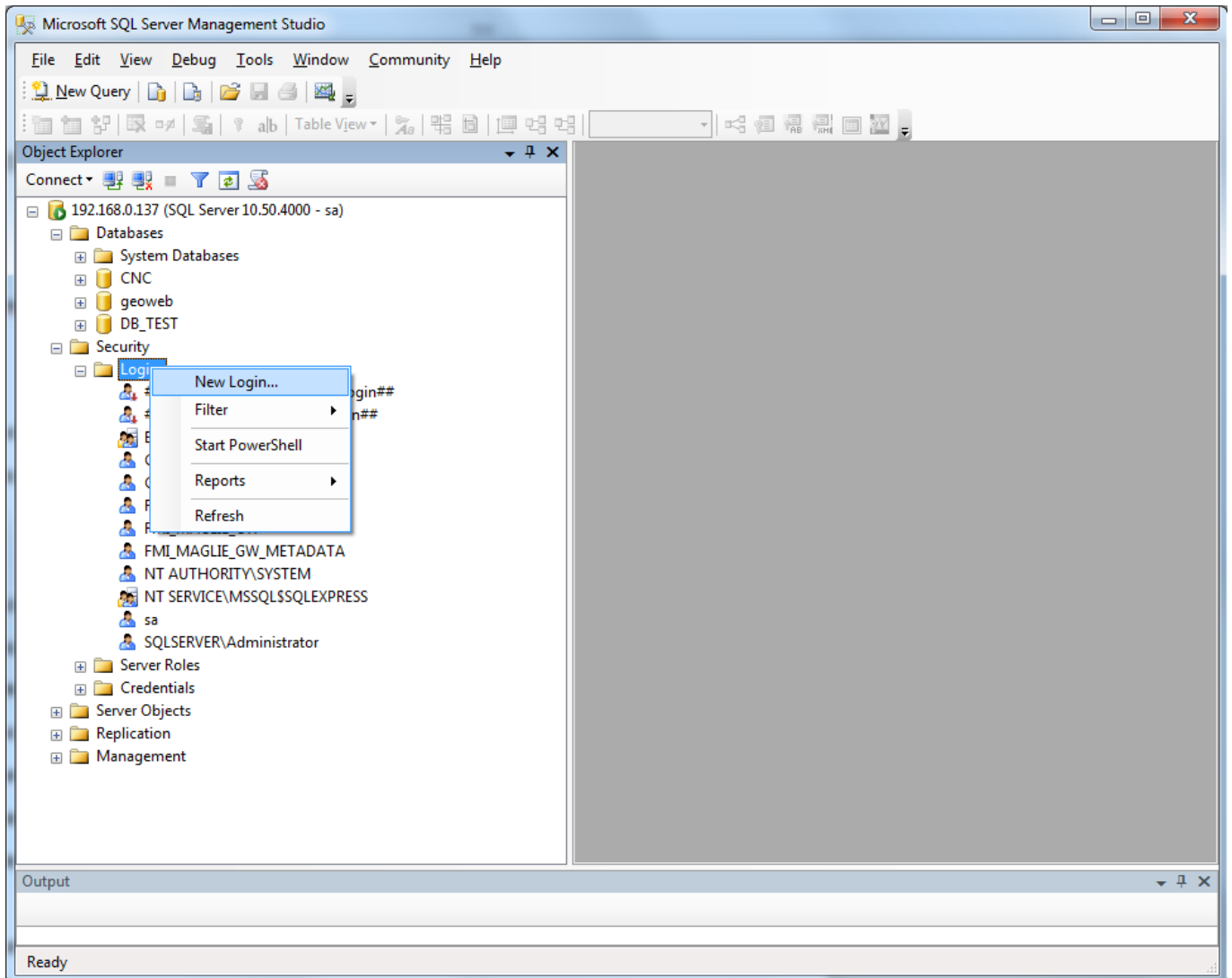
Creare un nuovo schema per i dati specificando:

- Database Name (es. DB_TEST_DATI)



Creazione Login

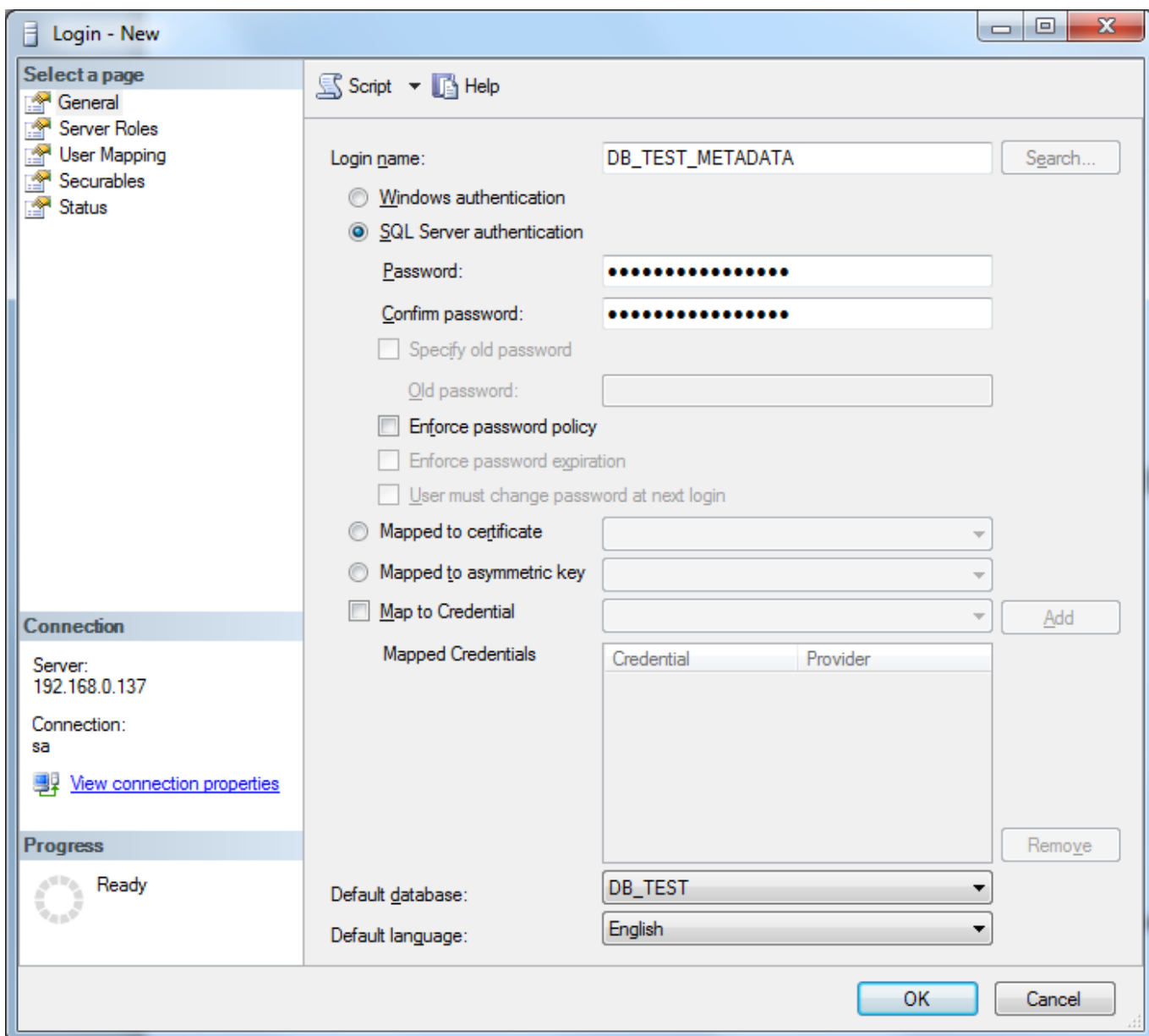
Accedere a Security → Logins → New Login ...



Creare una Login per lo schema dei metadata specificando:

- *nome della login (es. DB_TEST_METADATA)
- *tipo di autenticazione (SQL Server authentication)
- *password (es. DB_TEST_METADATA)
- *conferma password
- *default database (es. DB_TEST)
- *default language (es. English)

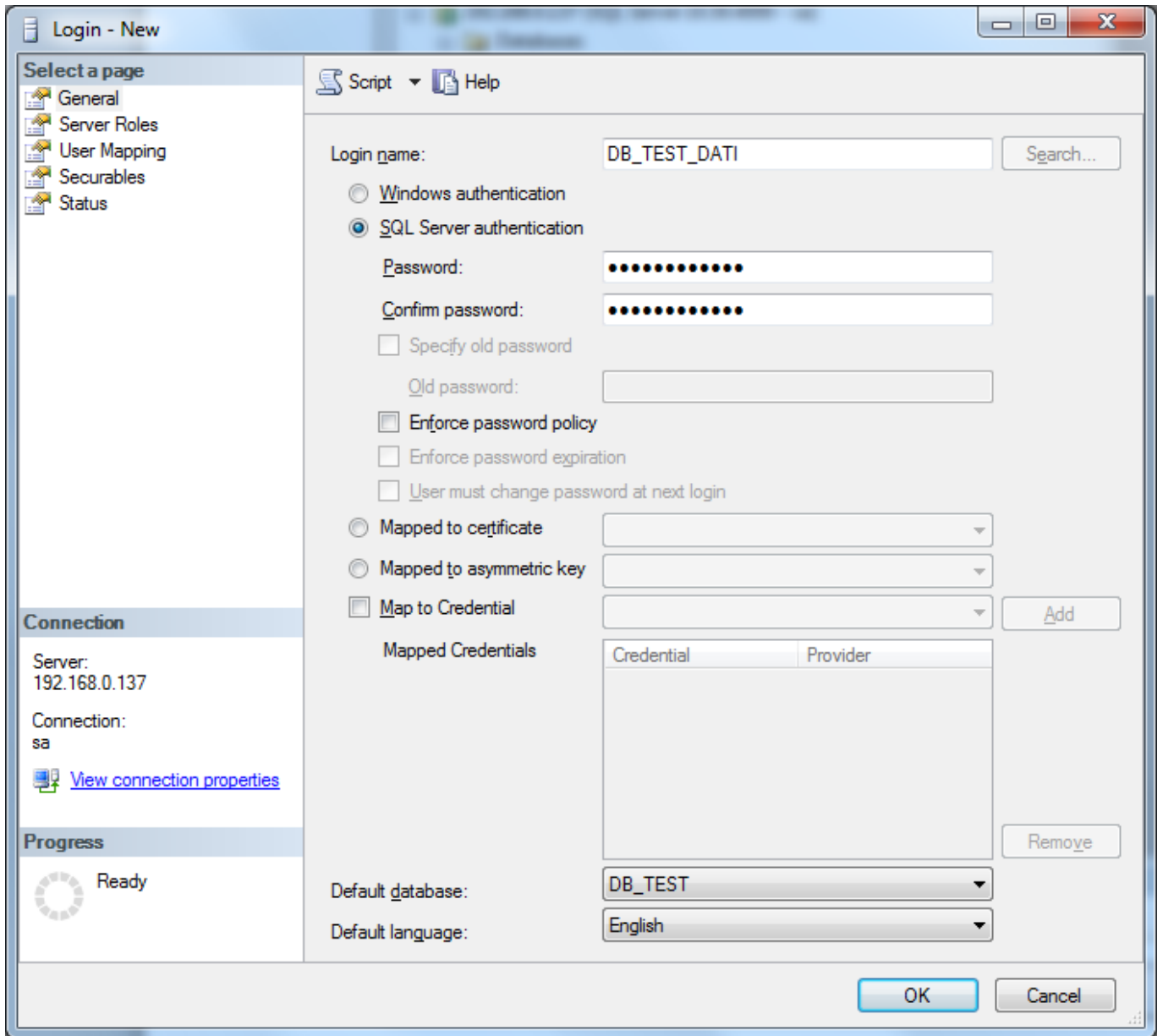
N.B. se la password non è complessa (presenza di maiuscole, minuscole, numeri) è necessario togliere l'opzione "Enforce password policy"



Creare una Login per lo schema dei dati specificando:

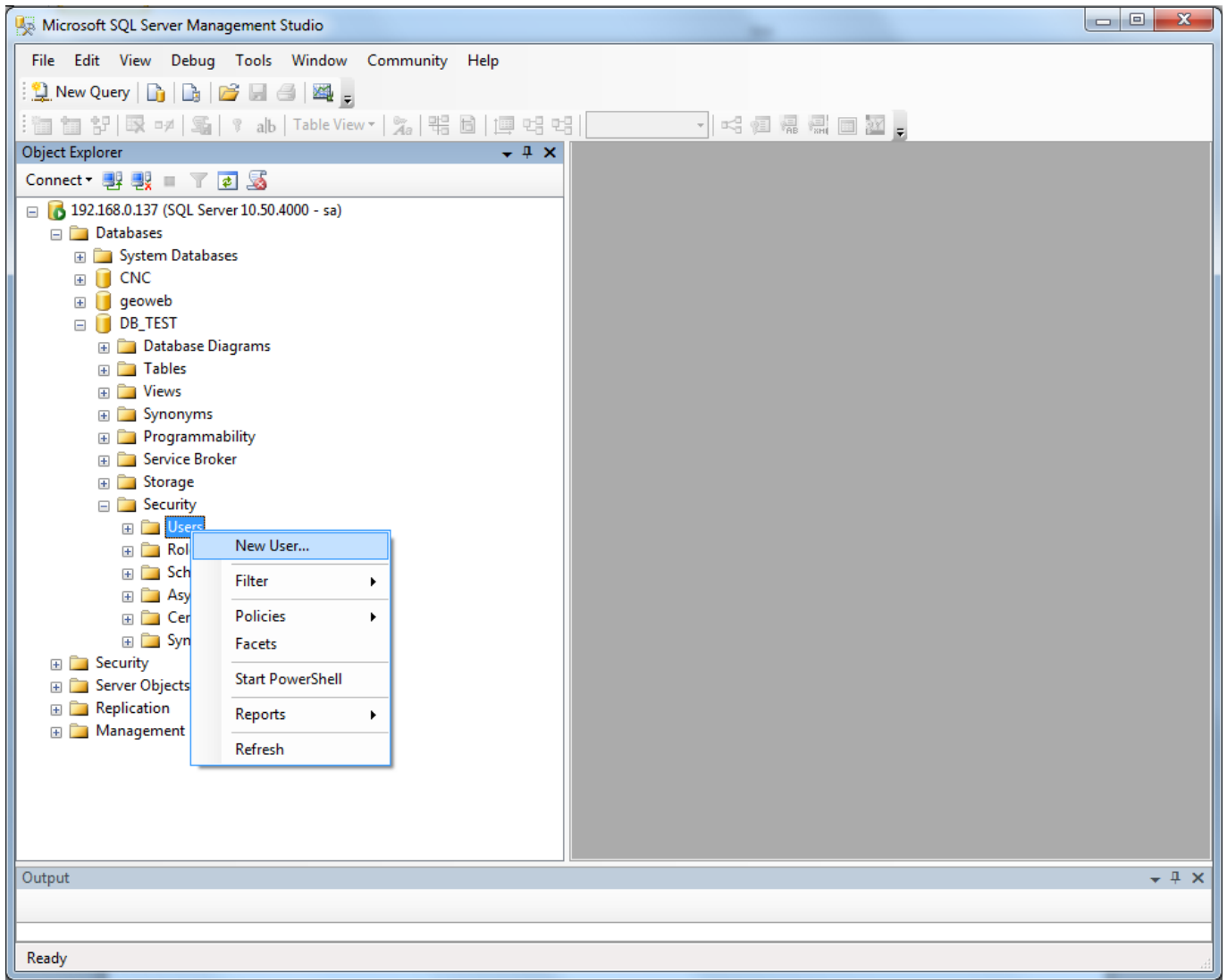
- *Login Name (es. DB_TEST_DATI)
- *Authentication (SQL Server authentication)
- *Password (es. DB_TEST_DATI)
- *Confirm Password
- *Default Database (es. DB_TEST)
- *Default Language (es. English)

N.B. se la password non è complessa (presenza di maiuscole, minuscole, numeri) è necessario togliere l'opzione "Enforce password policy"



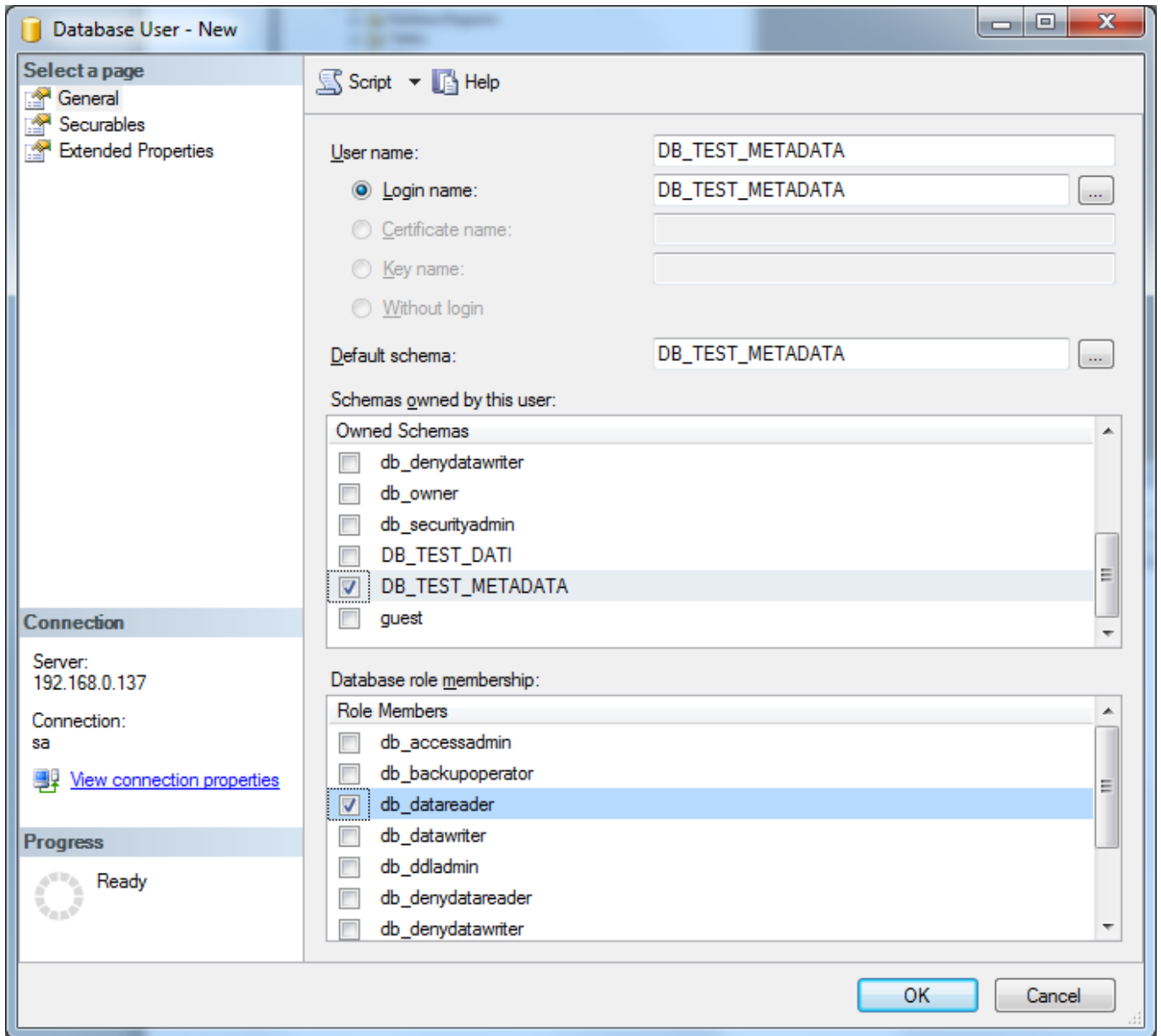
Creazione User

Accedere a Database → DB Specifico (es. DB_TEST) → Security → Users → New User ...



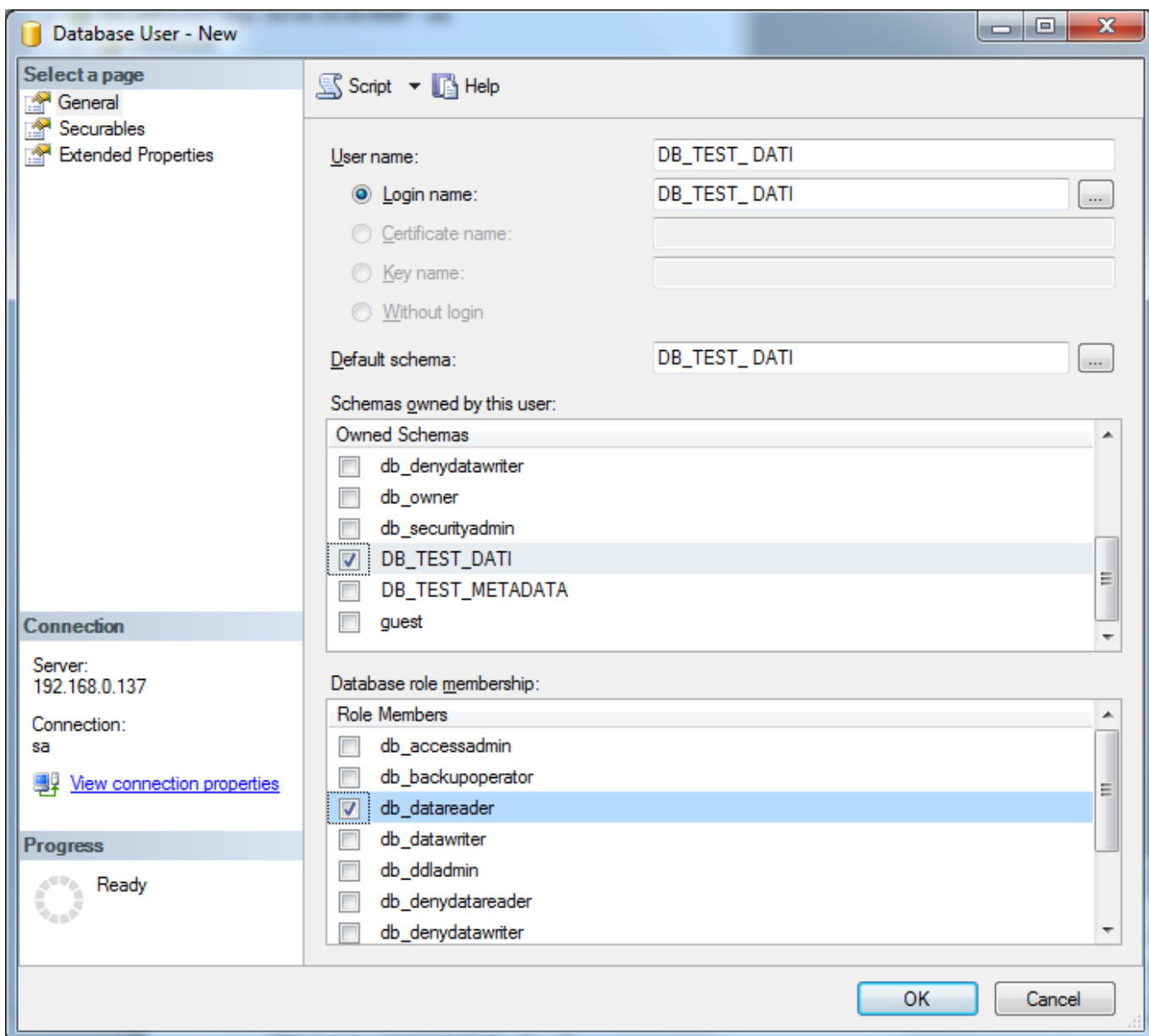
Creare un nuovo utente per lo schema dei metadati specificando:

- *User Name (es. DB_TEST_METADATA)
- *Login Name (es. DB_TEST_METADATA, scegli da elenco delle Login)
- *Default Schema (es. DB_TEST_METADATA, scegli da elenco schema)
- *Schemas Owned by this User (es. DB_TEST_METADATA)
- *Database Role Membership (db_datareader)



Creare un nuovo utente per lo schema dei dati specificando:

- *User Name (es. DB_TEST_DATI)
- *Login Name (es. DB_TEST_DATI, scegli da elenco delle Login)
- *Default Schema (es. DB_TEST_DATI, scegli da elenco schema)
- *Schemas Owned by this User (es. DB_TEST_DATI)
- *Database Role Membership (db_datareader)



From: <https://wiki.geowebframework.com/> - GeowebFramework

Permanent link: <https://wiki.geowebframework.com/doku.php?id=gwtipstricks:idxstipstricks:proceduracreazionebdbusqlserver>

Last update: 2019/11/06 09:42

